

## 1. Preparation

### 1.1 Safty

Please use the following tools and pay attention to safety during construction



Safety Clothing



Safety Shoes



Helmet



Safety Glass



Goggles

### 1.2 Tools



Allen wrench  
M8-M12



Wrench  
M8-M12



Twist Wrench  
M8-M12



Electric Rotor



Awning Turned



Electric Screw Machine



Tape Measure



Rope



Wood Hammer



Outer hexagonal bolt	Type of sleeve :	Inner hexagonal bolt	Type of sleeve :
ST6.3	10mm sleeve	M8	6mm hexagon wrench
M10	16(17)mm sleeve		
M12	18(19)mm sleeve		

If there is another type of bolt,pls use other sleeves

Sleeve

## 2. Components List



Rail



Rail Splice



End Clamp



Mid Clamp



Hook



Bolt



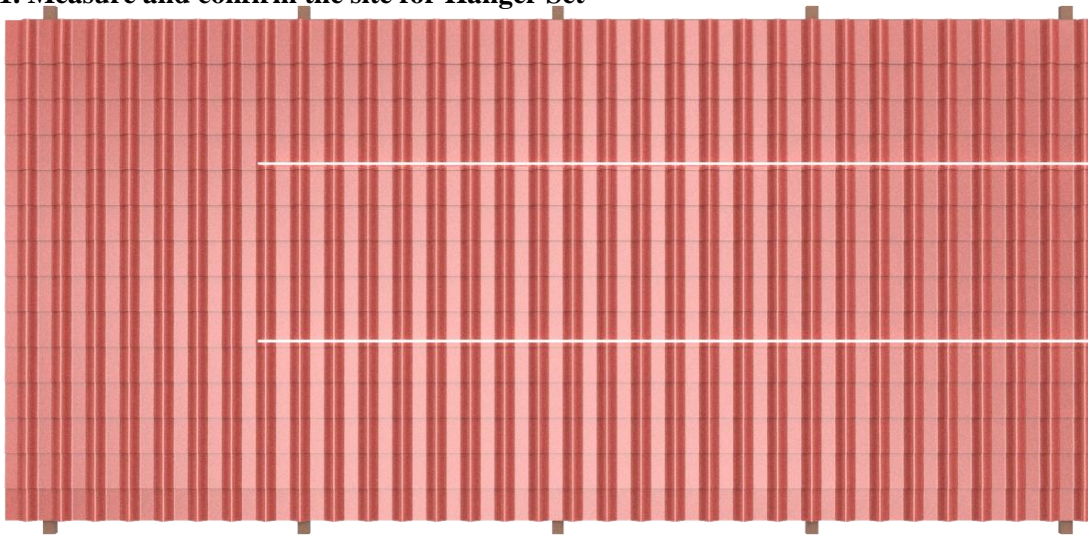
Wooden Screws



Rail Cap

### 3. Installation Step:

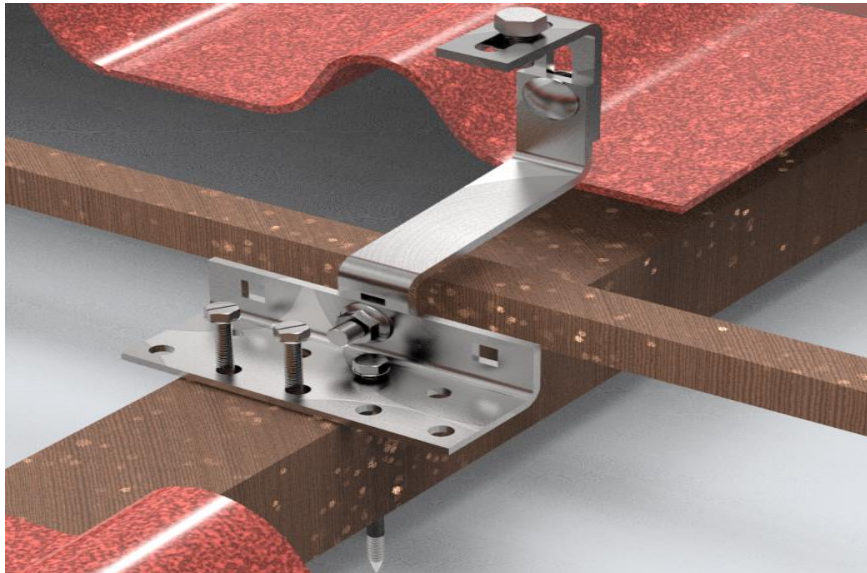
#### 3.1. 1. Measure and confirm the site for Hanger Set



#### 3.2.1 Lifting the ceramic tiles

#### 3.2.2 Drill the wooden screw to wooden pulin

#### 3.2.3 Tightening the bolt of Hook



Completed

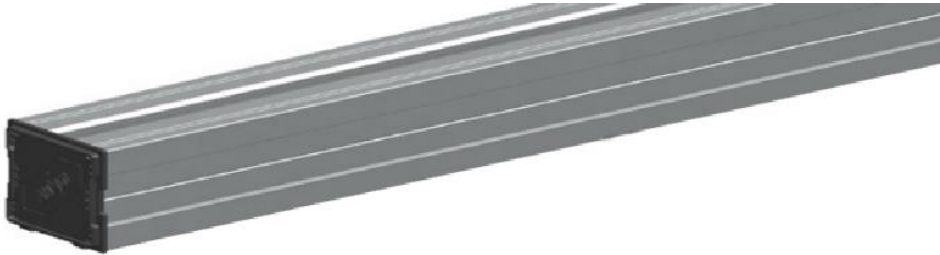




**3.3. Put the M10\*25mm bolt into the railing ,and then lock under the railing.**



**3.4. Install Railing Cap**



**3.5. If the length is not enough, using rail splice to connect.**

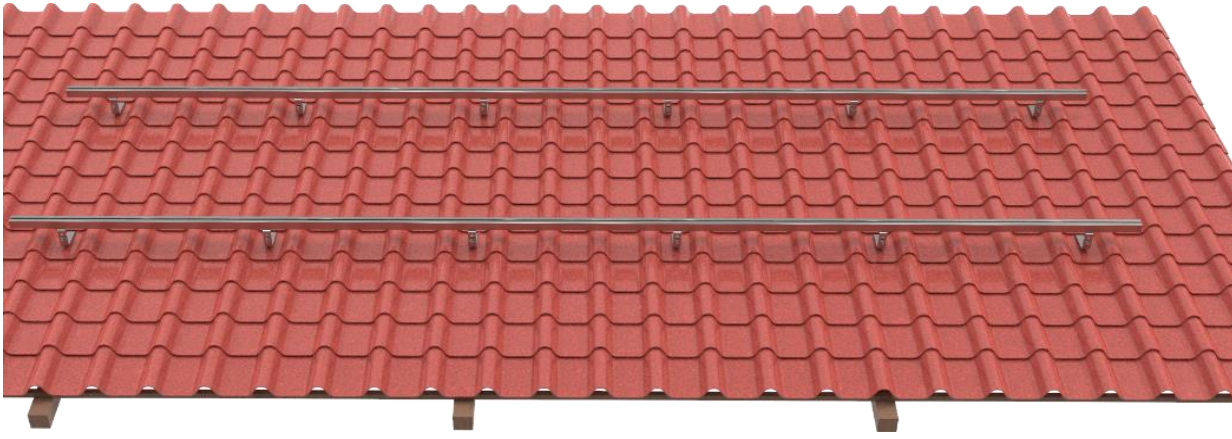
**Note : Install 2pcs of railing splice to the end of different railing,and drill the self-drilling screws.**



**Completed**



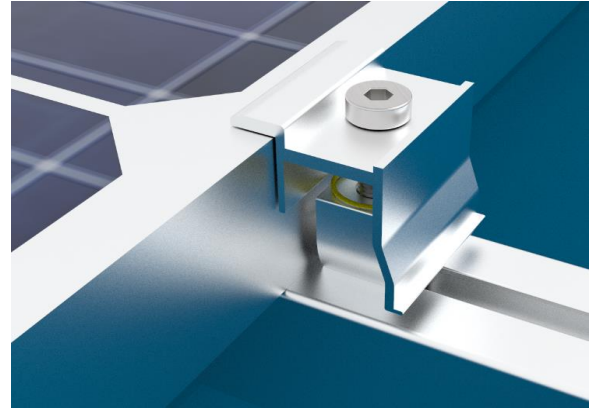
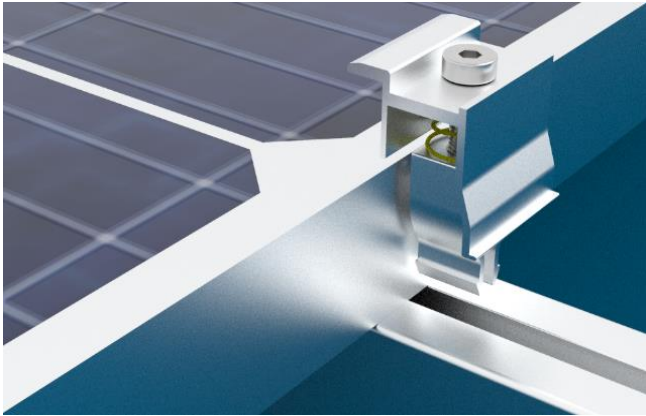
### Completed railing installation



#### 3.6. Install the solar panel on the end of railing(leave about 600mm span to lock End Clamp)

Step 1 : Directly press the End clamp into the railing.

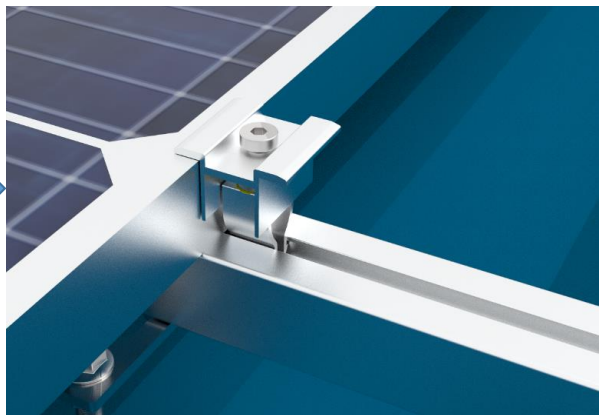
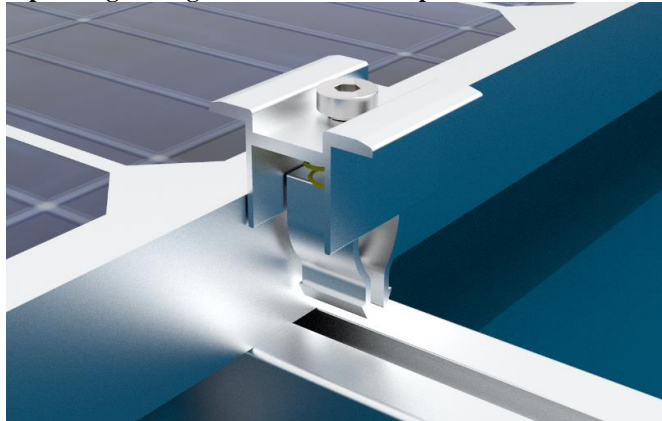
Step 2 : Tightening the bolt of end clamp.



#### 3.7. Install the mid clamp

Step 1 : Directly press the End clamp into the railing, and put the 2nd panel

Step 2 : Tightening the bolt of mid clamp.



#### 3.8. Install railing cap

Step 1 : Directly press the End clamp into the railing, and put the 2nd panel

Completed

